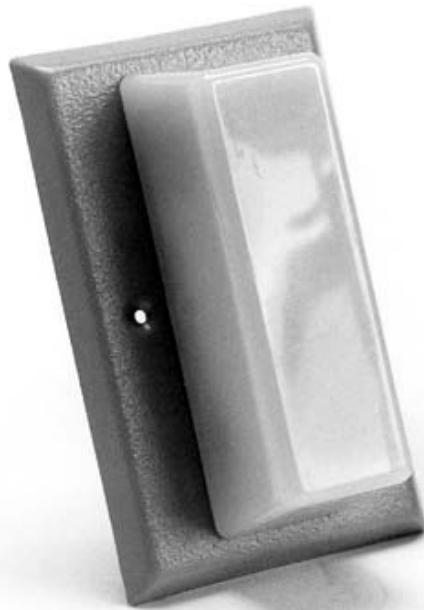


SERIES WH1



Series
WH1

FLASHING STROBES

These self-flashing units feature a xenon flashtube with solid state circuitry in rugged polycarbonate lens to deliver the high intensity and maximum reliability needed in offices, manufacturing or process areas, loading docks and warehouses. Units are 15 candela strobe ratings of 70,000 peak candlepower.

FEATURES

- High intensity output requires low power input
- Compact solid state design with long operating life (MTBC>1000 hours)
- Convenient mounting to standard, economical backboxes...flush models mount directly to standard, single-gang backboxes...surface models can be used indoors or outdoors
- Screw terminals for secure wiring

APPLICATIONS

An attention-getting strobe signal useful as a status light for:

- **Manufacturing** indication of equipment failure, warning device and process control status
- **Life/Safety** to alert individuals of changing conditions such as moving equipment and door opening and closing

See other side for ordering information and specifications



The W.L. Jenkins Company
1445 Whipple Ave., S.W. • Canton, Ohio 44710-1321
330-477-3407 • Fax: 330-477-8404
www.wljenkinsco.com

SERIES WH1 AND WH3

Ordering Information and Specifications

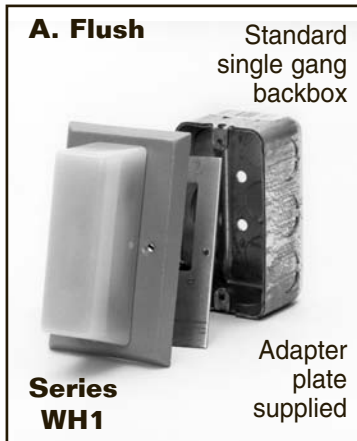


**Series
WH1**

Model #	Voltage	Current	Candela	Mounting
FLASHING STROBE SIGNALS				
WH1T-12-NS	12 VDC	0.150	15.0	C
WH1T-24-NS	24 VDC	0.075	15.0	C
WH1T-115-NS	115 VDC	0.060	15.0	C

NOTES: 1. All flashing strobe signals produce approximately one flash/second with continuously applied rated voltage.

Mounting Options (All optional mounting plates must be ordered separately.)



The W.L. Jenkins Company
1445 Whipple Ave., S.W. • Canton, Ohio 44710-1321
330-477-3407 • Fax: 330-477-8404
www.wljenkinsco.com